

Super Power

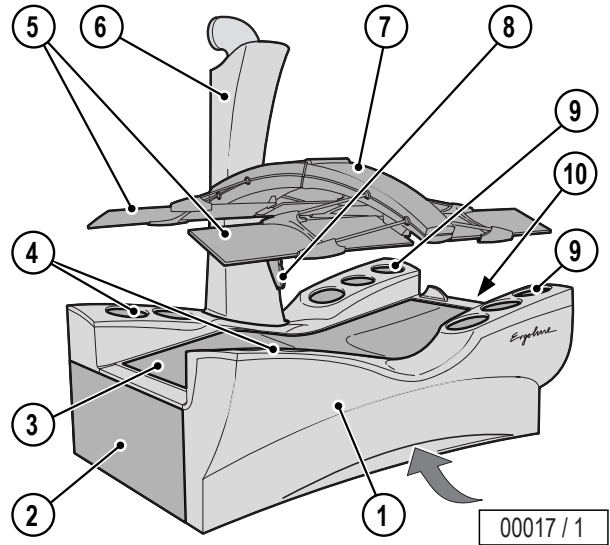
Open Sun A.R.T. 600

Contents

Device description.....	2
Technical Data.....	2
Dimensions.....	3
Maximum exhaust pipe length.....	4
Equipment cooling.....	4
Surround cooling.....	5
Exhaust air accessories.....	5
Electrical connections.....	6
Sound system.....	6
Controls.....	6
Air conditioner (not available).....	6

Device description

1. Front panel with inlet air aperture (air inlet for equipment cooling)
2. Feet end
3. Acrylic glass panel lower part
4. UV high pressure lamps (feet end)
5. 2 Reflector banks (glass)
6. Central exhaust air bracket (column)
7. Reflector arm with surround air
8. Control panel with display
9. UV high-pressure lamps (head end)
10. Head end



Technical Data

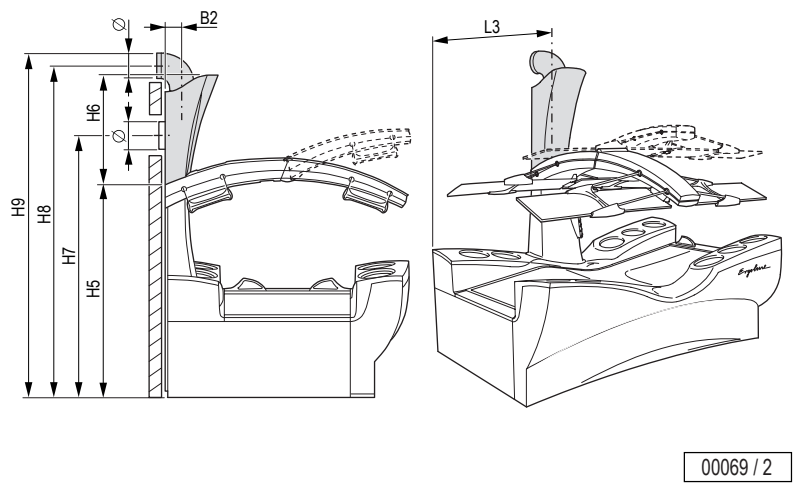
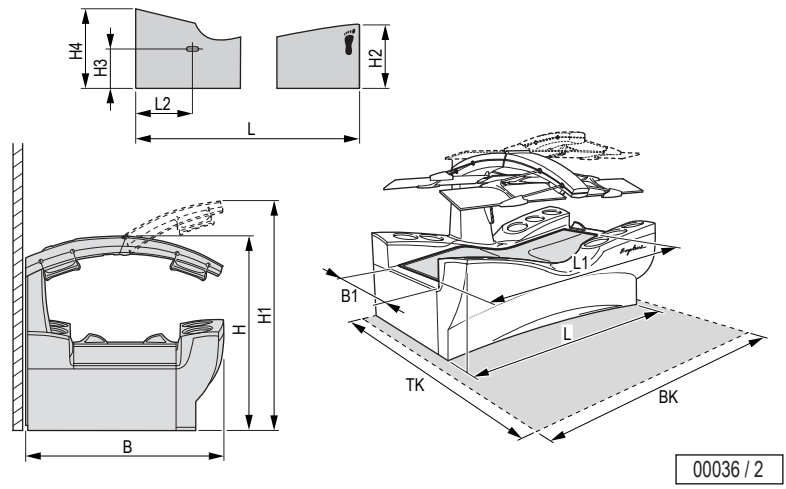
Electrical data	
Nominal power consumption:	13 300 W
Nominal voltage:	400 – 415 V ~3N
Nominal frequency:	50 Hz
Rated fusing:	3 x 25 A (time-delay)
Performance:	
Canopy:	
UV low pressure lamps	17 x 100 W
Lower part:	
UV high pressure lamps in the upper body region	6 x 800 W
UV high pressure lamps in the feet region	4 x 700 W

Noise emission	
Acoustic pressure level:	62.3 db (A)
Inlet and exhaust air	
Temperature difference, supply/ exhaust air:	11 °C
Max. air requirement:	2500 m ³ /h
Opt. ambient temperature:	25 °C
Max. ambient temperature:	40 °C
Max. inlet air temperature:	550 cm ²
Exhaust cross section w/o exhaust system:	4100 cm ²
Cabin inlet air cross section	490 cm ² (710 cm ²) ¹⁾
Warm air return:	not possible

1) when using a 300 mm pipe adapter (see Exhaust air accessories)

Dimensions

B	1660 mm
B1	850 mm
B2	127 mm
L	2332 mm
L1	2100 mm
L2	780 mm
L3	1100 mm
H	1600 mm
H1	1780 mm
H2	800 mm
H3	470 mm
H4	900 mm
H5	1430 mm
H6	700 mm
H7	1910 mm
H8	2370 mm
H9	2496 mm
∅	250 mm
BK	2400 mm
TK	2500 mm



Maximum exhaust pipe length

Calculation base (without additional ventilator):

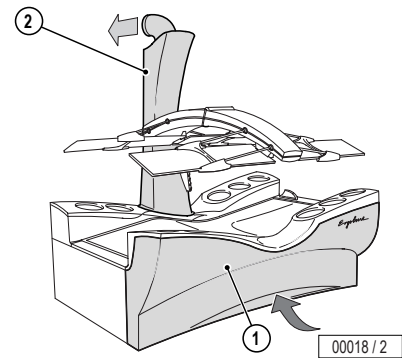
Back pressure	100 Pascal
Air pressure	100,000 Pascal
Air temperature	40 °C
Density	1.112 kg/m ³
Dynamic inertia of the air	1.92E-05 Pa x s

Corrugated pipe ∅	Roughness (at centre) k _{absolute}	Flow volume	Loss coefficient		90° bend in line (metal)	Permissible length of straight line
			of pipe	of bend		
mm	mm	m ³ /h			pieces	m
250 (300) ¹⁾	8	2500	0.182 ²⁾	0.21 ²⁾	0	12
					1	10
					2	8
					3	6

- 1) can be extended
- 2) zeta value (ζ)

Equipment cooling

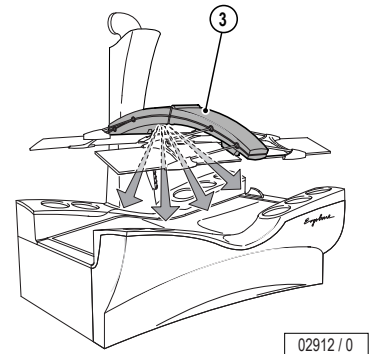
Cabin or studio air (inlet air) is drawn in under the front panel (1) for cooling the device. The air is first cleaned in a filter, fed past the hot UV low-pressure and high-pressure lamps and finally expelled as warm exhaust air via the central exhaust air bracket (2).



Surround cooling

Surround air is supplied to the user via an oscillating fan in the reflector arm (3). Cabin or studio air is drawn in via air inlet slots above the reflector arm and supplied to the user via outlet nozzles underneath the reflector arm.

Infinite adjustment of the fan can be made manually at any time, to suit the user's comfort requirements.



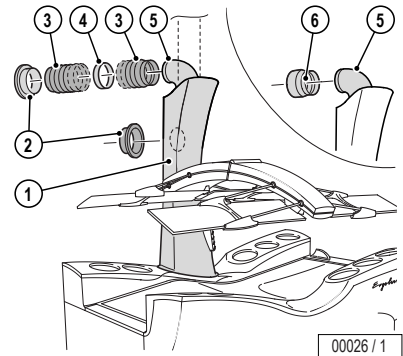
02912 / 0

Exhaust air accessories

Connection to a central exhaust air system at the rear or upwards is possible.

The apertures intended for this purpose are located above the central exhaust air bracket.

Adequate ventilation of the equipment is possible up to an exhaust air pipe length of 12 meters (without 90° bend). For exhaust air pipe lengths greater than 12 meters, you will require an additional fan.



00026 / 1

Item	Accessory parts	Article No.	Notes
1	Central exhaust air bracket in blue, without warm air recycling (Ø 250 mm)	3452140	with tube adapter (see Item 6) connection to a corrugated pipe of Ø 300 mm is possible
2	Connector bracket for corrugated pipe (Ø 250 mm)	3450350	Connection of the corrugated pipe, e.g. to a canal
3	Corrugated pipe (Ø 250 mm, 6 m length, flexible, grey) including 2 hose clips	3400580	–
4	Corrugated pipe connector piece (Ø 250 mm)	3400670	For connecting two pipes
5	90° tube bend in blue for exhaust air connection, upwards	3452190	Installation angle can be offset by 45°
6	Tube adapter (Ø 250 mm to Ø 300 mm)	3452200	–

Electrical connections

Mains supply line	provided
Electr. control line	none
Line for external music and channel selection	approx. 3000 mm

Sound system

	Article No.	Notes
Audio package ●	–	Audio unit with VoiceGuide
Loudspeaker set ●	–	

● = as standard

Controls

Control	Article No.	Notes
MCS III plus hand-held remote control	3401060	With chip card terminal
MCS IV plus	3401040	With electronic coin tester
MCS VI	3400970	With electronic coin tester + chip card terminal
Studiopilot	3400990	With electronic coin tester + chip card terminal
Studio-Manager	3452900	Software

Air conditioner (not available)

No air conditioner can be supplied with this device model.